

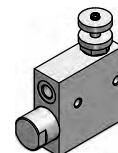
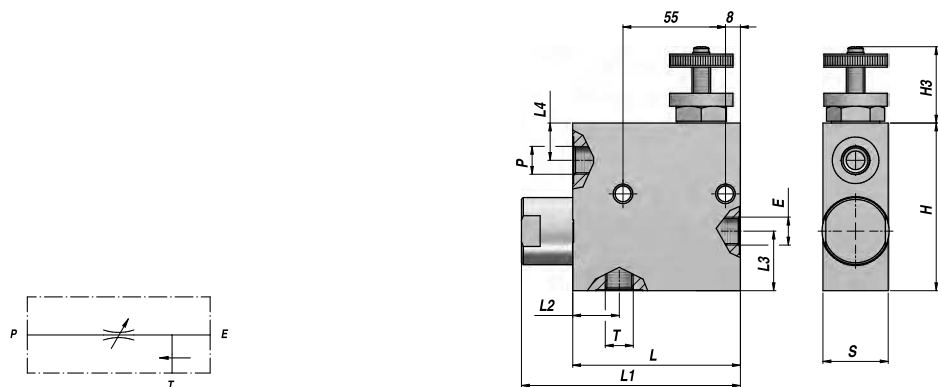
RISERVATO

SU PREZZI

DI LISTINO 12%

REGOLATORE DI FLUSSO PRIORITARIO (COMPENSATO BARICAMENTE)
PRIORITY FLOW CONTROL (PRESSURE COMPENSATED)
VORZUGSTROMREGLER (DRUCKKOMPENSIERT)

RFP 3



REGOLABILE - ADJUSTABLE - EINSTELLBAR
ECCEDENZA A SCARICO - EXCEEDING FLOW TO TANK - RESTÖLSTROM ZUM TANK

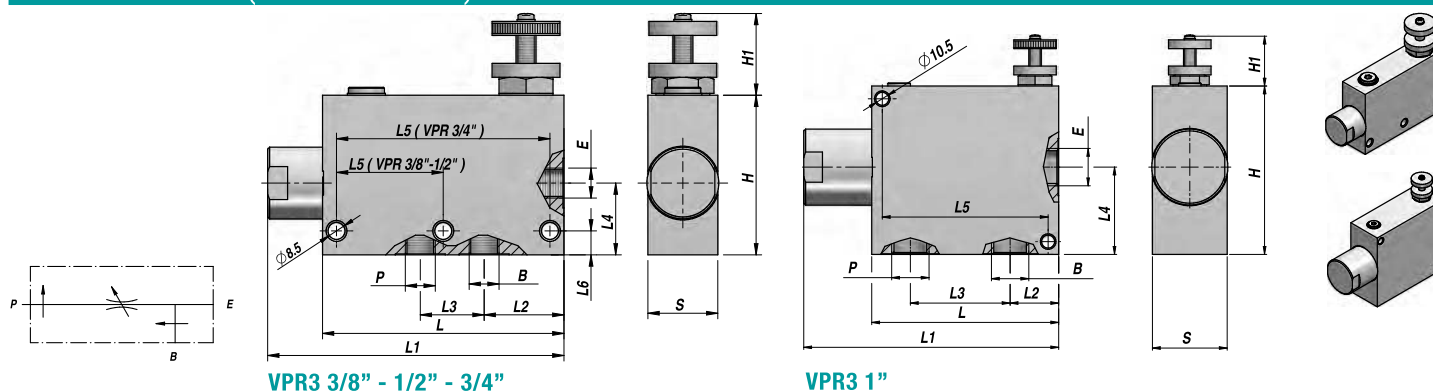
Codice Code Bestell-Nr.	E - P - T BSP	Q MAX l/min In (E)/Reg (P)	P MAX bar	Tipo Type Typ	L	L1	L2	L3	L4	H1	H	S	kg
V3390.1110	3/8"	50 / 30	350	RFP 3 3/8"	90	116	25	32	20	35	90	35	2,17
V3390.1120	1/2"	85 / 50	350	RFP 3 1/2"	90	116	25	32	20	35	90	35	2,10

MONTAGGIO IN LINEA
LINE MOUNTING
REIHENMONTAGE

MATERIALE - MATERIAL: ACCIAIO - STEEL - STAHL

REGOLATORE DI FLUSSO PRIORITARIO (COMPENSATO BARICAMENTE)
PRIORITY FLOW CONTROL (PRESSURE COMPENSATED)
VORZUGSTROMREGLER (DRUCKKOMPENSIERT)

VPR 3



VPR3 3/8" - 1/2" - 3/4"

VPR3 1"

REGOLABILE - ADJUSTABLE - EINSTELLBAR
ECCEDENZA IN PRESSIONE - EXCEEDING FLOW TO PRESSURE - RESTÖLSTROM ZUM DRUCK

Codice Code Bestell-Nr.	E - P - B BSP	Q MAX l/min In (E)/Reg (P)	P MAX bar	Tipo Type Typ	L	L1	L2	L3	L4	L5	L6	H1	H	S	kg
V3490.1060	3/8"	50 / 40	350	VPR 3 3/8"	121	147	40	32	36	55	12	35	80	35	2,53
V3490.1070	1/2"	85 / 60	350	VPR 3 1/2"	121	147	37	36	36	55	12	35	80	35	2,47
V3490.1080	3/4"	150/ 90	350	VPR 3 3/4"	155	190	67	44	45	135	8	35	90	50	2,40
V3490.1090 *	1"	250/150	210	VPR 3 1"	150	205	39	80	70	133	114,5	35	135	60	4,00

MONTAGGIO IN LINEA
LINE MOUNTING
REIHENMONTAGE

MATERIALE - MATERIAL: ACCIAIO - STEEL - STAHL
* MATERIALE - MATERIAL: ALLUMINIO - ALUMINIUM

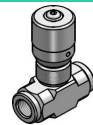
VALVOLE CONTROLLO FLUSSO



VRFU 90

REGOLATORE DI FLUSSO
(TENUTA A CONO)

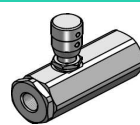
CODICE	TIPO	Listino	Sc	Netto
VSG521.100000	VRFU90 010	29,10	0	29,10
VSG521.200000	VRFU90 020	29,90	0	29,90
VSG521.300000	VRFU90 030	33,90	0	33,90
VSG521.400000	VRFU90 040	65,45	0	65,45
VSG521.500000	VRFU90 050	97,20	0	97,20



VRFB 90

REGOLATORE DI FLUSSO

CODICE	TIPO	Listino	Sc	Netto
VSG522.100000	VRFB90 010	23,65	0	23,65
VSG522.200000	VRFB90 020	24,90	0	24,90
VSG522.300000	VRFB90 030	26,50	0	26,50
VSG522.400000	VRFB90 040	50,55	0	50,55
VSG522.500000	VRFB90 050	77,70	0	77,70



VRFU 90-C

REGOLATORE DI FLUSSO
COMPENSATO (TENUTA A CONO)

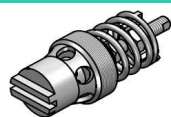
CODICE	TIPO	Listino	Sc	Netto
VSG523.1C0000	VRFU090-C 010	49,40	0	49,40
VSG523.2C0000	VRFU090-C 020	50,30	0	50,30
VSG523.3C0000	VRFU090-C 030	73,55	0	73,55



VS

VITE STROZZATRICE

CODICE	TIPO	Listino	Sc	Netto
V2890.1351	VS 1/4"	4,95	0	4,95
V2890.1361	VS 3/8"	6,60	0	6,60
V2890.1371	VS 1/2"	9,50	0	9,50



VRD

VALVOLA DI RALLENTAMENTO
REGOLABILE

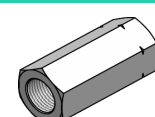
CODICE	TIPO	Listino	Sc	Netto
VCG501.100*00	VRD 010-*	35,60	0	35,60
VCG501.200*00	VRD 020-*	35,60	0	35,60
VCG501.300*00	VRD-030*	43,05	0	43,05
VCG501.400*00	VRD-040*	54,85	0	54,85



CMF x VRD

COLLETTORE PER VALVOLA "VRD"

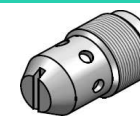
CODICE	TIPO	Listino	Sc	Netto
VCG502.100000	CMF x VRD 020	5,45	0	5,45
VCG502.200000	CMF x VRD 020	5,40	0	5,40
VCG502.300000	CMF x VRD 030	6,20	0	6,20
VCG502.400000	CMF x VRD 040	8,05	0	8,05



CFF x VRD

COLLETTORE PER VALVOLA "VRD"

CODICE	TIPO	Listino	Sc	Netto
VCG503.100000	CFF x VRD 020	5,45	0	5,45
VCG503.200000	CFF x VRD 020	5,70	0	5,70
VCG503.300000	CFF x VRD 030	6,60	0	6,60
VCG503.400000	CFF x VRD 040	8,05	0	8,05



VSC

VALVOLA DI RALLENTAMENTO

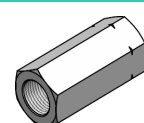
CODICE	TIPO	Listino	Sc	Netto
VCG505.10*000	VSC 010-*	8,90	0	8,90
VCG505.20*000	VSC 020-*	10,60	0	10,60
VCG505.30*000	VSC 030-*	11,35	0	11,35



CMF x VSC

COLLETTORE PER VALVOLA "VSC"

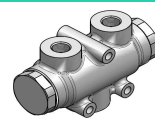
CODICE	TIPO	Listino	Sc	Netto
VCG506.100000	CMF x VSC 010	2,20	0	2,20
VCG506.200000	CMF x VSC 020	2,65	0	2,65
VCG506.300000	CMF x VSC 030	8,65	0	8,65



CFF x VSC

COLLETTORE PER VALVOLA "VSC"

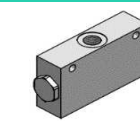
CODICE	TIPO	Listino	Sc	Netto
VCG507.100000	CFF x VSC 010	3,60	0	3,60
VCG507.200000	CFF x VSC 020	4,20	0	4,20
VCG507.300000	CFF x VSC 030	7,00	0	7,00



VEQ

DIVISORE DI FLUSSO

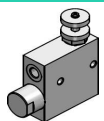
CODICE	TIPO	Listino	Sc	Netto
V3615.0311	VEQ 8	184,40	0	184,40
V3615.0312	VEQ 10	181,00	0	181,00
V3615.0313	VEQ 15	173,20	0	173,20
V3615.0314	VEQ 20	169,85	0	169,85
V3615.0315	VEQ 22	169,85	0	169,85
V3615.0316	VEQ 25	177,65	0	177,65
V3615.0317	VEQ 30	177,65	0	177,65
V3615.0318	VEQ 50	184,40	0	184,40



VDF

DIVISORE DI FLUSSO

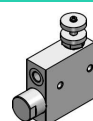
CODICE	TIPO	Listino	Sc	Netto
VAG501.20*000	VDF 020-*	129,95	0	129,95
VAG501.25*000	VDF 025-*	129,95	0	129,95
VAG501.35*000	VDF 035-*	394,25	0	394,25



RFP 3

REGOLATORE DI FLUSSO PRIORITARIO
(COMPENSATO BARICAMENTE)

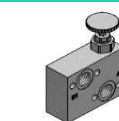
CODICE	TIPO	Listino	Sc	Netto
V3390.1110	RFP 3 3/8"	104,65	0	104,65
V3390.1120	RFP 3 1/2"	107,65	0	107,65
V3390.1130	RFP 3 3/4"	196,25	0	196,25



RFP 3VU

REGOLATORE DI FLUSSO PRIORITARIO
CON VALVOLA UNIDIREZIONALE

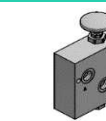
CODICE	TIPO	Listino	Sc	Netto
V3390.1110VU	RFP-VU 3 3/8"	128,20	0	128,20
V3390.1120VU	RFP-VU 3 1/2"	129,20	0	129,20



BVR01

REGOLATORE DI FLUSSO PER MOTORI
MP/MR (OMP/OMR)

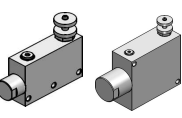
CODICE	TIPO	Listino	Sc	Netto
VBVR012010	BVR 12.01	100,95	0	100,95



BVR05

REGOLATORE DI FLUSSO PER MOTORI
MP/MR (OMP/OMR)

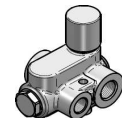
CODICE	TIPO	Listino	Sc	Netto
VBVR012050	BVR 12.05	165,85	0	165,85



VPR 3

REGOLATORE DI FLUSSO PRIORITARIO
(COMPENSATO BARICAMENTE)

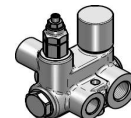
CODICE	TIPO	Listino	Sc	Netto
V3490.1060	VPR 3 3/8"	128,40	0	128,40
V3490.1070	VPR 3 1/2"	131,40	0	131,40
V3490.1080	VPR 3 3/4"	225,50	0	225,50
V3490.1090	VPR 3 1"	274,05	0	274,05



RFP..G

REGOLATORE DI FLUSSO PRIORITARIO
(COMPENSATO BARICAMENTE)

CODICE	TIPO	Listino	Sc	Netto
V6215.0320	RFP 40 G	137,15	0	137,15
V6215.0322	RFP 70 G	166,45	0	166,45



RFPV..G

REGOLATORE DI FLUSSO PRIORITARIO
(COMPENSATO BARICAMENTE)

CODICE	TIPO	Listino	Sc	Netto
V6215.0321	RFPV 40 GU	193,10	0	193,10
V6215.0323	RFPV 70 GU	219,70	0	219,70