

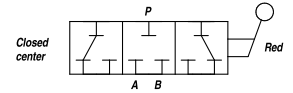
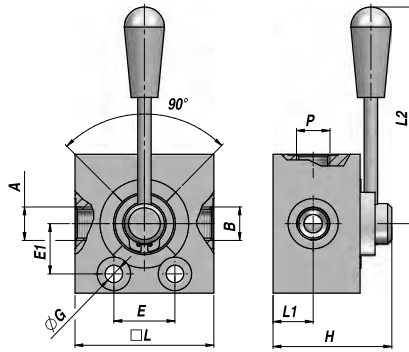
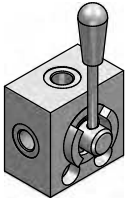
RISERVATO

SU PREZZI

DI LISTINO 12%

DDF3 AP..C

DEVIATORE A 3 VIE "AP..C" - CENTRO CHIUSO - ALTA PRESSIONE
3-WAY FLOW DEFLECT VALVE "AP..C" - CLOSED CENTRE - HIGH PRESSURE
3-WEGE UMSCHALTHAHN "AP..C" - GESCHLOSSENE RUHESTELLUNG - HOCHDRUCK



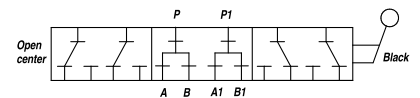
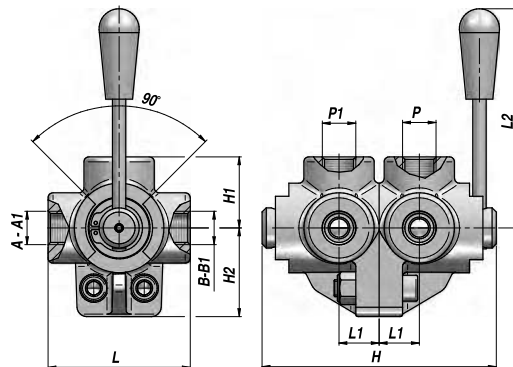
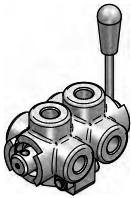
Codice Code Bestell-Nr.	P A - B BSP	Q MAX l/min	P MAX bar	Tipo Type Typ	L	L1	L2	ØG	E	E1	H	kg
V71367.C00600	3/8"	60	450	DDF3 AP 020 C	68	21	135	8,5	30	24,75	62	1,38
V71367.C00800	1/2"	90	400	DDF3 AP 030 C	83	24	130	10,5	36,5	30	71	2,38
V71367.C01200	3/4"	120	350	DDF3 AP 040 C	87	28	130	11	32	30,5	80	2,88
V71367.C01600	1"	180	320	DDF3 AP 050 C	106	31,5	160	11	60	38	89	4,76

MONTAGGIO IN LINEA
LINE MOUNTING
REIHENMONTAGE

MATERIALE - MATERIAL: GHISA - CAST IRON - HYDRAULIKGUSS
(corpo zincato - zinc-plated body - verzinkter Körper)

DDF6-A

DEVIATORE A 6 VIE - CENTRO APERTO
6-WAY FLOW DEFLECT VALVE - OPEN CENTRE
6-WEGE UMSCHALTHAHN - OFFENE RUHESTELLUNG



Codice Code Bestell-Nr.	P A - B BSP	P1 A1 - B1 BSP	Q MAX l/min	P MAX bar	Tipo Type Typ	L	L1	L2	H	H1	H2	kg
V70667.A00600	3/8"	3/8"	60	315	DDF6-A 020	73	21	135	124	36,5	42	1,76
V70667.A00800	1/2"	1/2"	90	280	DDF6-A 030	85	24	130	140	42,5	53	2,90
V70667.A01200	3/4"	3/4"	120	250	DDF6-A 040	91	28	130	160	45,5	56	3,74
V70667.A01600	1"	1"	180	220	DDF6-A 050	98	31,5	160	180	49	64	5,20

MONTAGGIO IN LINEA
LINE MOUNTING
REIHENMONTAGE

MATERIALE - MATERIAL: GHISA - CAST IRON - HYDRAULIKGUSS

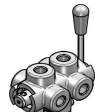
VALVOLE DIREZIONALI



DDF6-A

DEVIATORE A 6 VIE
CENTRO APERTO

CODICE	TIPO	Listino	Sc	Netto
V70667.A00600	DDF6-A 020	57,90	0	57,90
V70667.A00800	DDF6-A 030	67,65	0	67,65
V70667.A01200	DDF6-A 040	83,45	0	83,45
V70667.A01600	DDF6-A 050	116,40	0	116,40



DDF6-C

DEVIATORE A 6 VIE
CENTRO CHIUSO

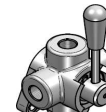
CODICE	TIPO	Listino	Sc	Netto
V70667.C00600	DDF6-C 020	57,90	0	57,90
V70667.C00800	DDF6-C 030	67,65	0	67,65
V70667.C01200	DDF6-C 040	83,45	0	83,45
V70667.C01600	DDF6-C 050	116,40	0	116,40



IDF4-A

INVERTITORE A 4 VIE
CENTRO APERTO

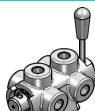
CODICE	TIPO	Listino	Sc	Netto
V70467.A00600	IDF4-A 020	38,20	0	38,20
V70467.A00800	IDF4-A 030	43,55	0	43,55
V70467.A01200	IDF4-A 040	60,20	0	60,20



IDF4-C

INVERTITORE A 4 VIE
CENTRO CHIUSO

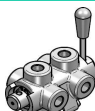
CODICE	TIPO	Listino	Sc	Netto
V70467.C00600	IDF4-C 020	38,20	0	38,20
V70467.C00800	IDF4-C 030	43,55	0	43,55
V70467.C01200	IDF4-C 040	60,20	0	60,20



IDF8-A

INVERTITORE A 8 VIE
CENTRO APERTO

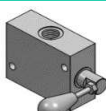
CODICE	TIPO	Listino	Sc	Netto
V70867.A00600	IDF8-A 020	77,35	0	77,35
V70867.A00800	IDF8-A 030	87,55	0	87,55
V70867.A01200	IDF8-A 040	122,10	0	122,10



IDF8-C

INVERTITORE A 8 VIE
CENTRO CHIUSO

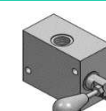
CODICE	TIPO	Listino	Sc	Netto
V70867.C00600	IDF8-C 020	77,35	0	77,35
V70867.C00800	IDF8-C 030	87,55	0	87,55
V70867.C01200	IDF8-C 040	122,10	0	122,10



BDR01

INVERTITORE A 4 VIE PER MOTORI
MP/MR (OMP/OMR)
CENTRO APERTO

CODICE	TIPO	Listino	Sc	Netto
VBDR012010	BDR 12.01	120,40	0	120,40

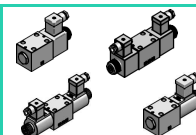


BDR04

INVERTITORE A 4 VIE PER MOTORI
MP/MR (OMP/OMR) + V.M.P. -
CENTRO APERTO

CODICE	TIPO	Listino	Sc	Netto
VBDR012040	BDR 12.04/25	202,10	0	202,10

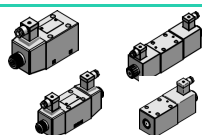
VALVOLE DIREZIONALI ELETTRICHE E PIASTRE



LC1

ELETTROVALVOLA A COMANDO
DIRETTO CETOP 3

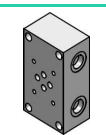
CODICE	TIPO	Listino	Sc	Netto
EL10A02002450	A201AZ 24/50VAC	199,55	0	199,55
EL10A02011050	A201AZ 110/50VAC	201,10	0	201,10
EL10A02022050	A201AZ 220/50VAC	201,10	0	201,10
EL10A02012VDC	A201DZ 12VDC	182,05	0	182,05
EL10A02024VDC	A201DZ 24VDC	182,05	0	182,05
EL10B02002450	B201AZ 24/50VAC	183,95	0	183,95
EL10B02011050	B201 AZ110/50VAC	183,95	0	183,95
EL10B02022050	B201AZ 220/50VAC	183,95	0	183,95
EL10B02012VDC	B201DZ 12VDC	166,45	0	166,45
EL10B02024VDC	B201DZ 24VDC	166,45	0	166,45
EL10C02002450	C201AZ 24/50VAC	185,35	0	185,35
EL10C02011050	C201AZ 110/50VAC	185,35	0	185,35
EL10C02022050	C201AZ 220/50VAC	183,95	0	183,95
EL10C02012VDC	C201DZ 12VDC	167,75	0	167,75
EL10C02024VDC	C201DZ 24VDC	166,45	0	166,45
EL10E02002450	E201AZ 24/50VAC	185,35	0	185,35
EL10E02011050	E201AZ 110/50VAC	185,35	0	185,35
EL10E02022050	E201AZ 220/50VAC	185,35	0	185,35
EL10E02012VDC	E201DZ 12VDC	166,45	0	166,45
EL10E02024VDC	E201DZ 24VDC	166,45	0	166,45
EL10A11S02450	A301AZ 24/50VAC	152,00	0	152,00
EL10A11S11050	A301AZ 110/50VAC	152,00	0	152,00
EL10A11S22050	A301AZ 220/50VAC	150,80	0	150,80
EL10A11S12VDC	A301DZ 12VDC	142,10	0	142,10
EL10A11S24VDC	A301DZ 24VDC	143,20	0	143,20
EL10A11C02450	Y301AZ 24/50VAC	136,25	0	136,25
EL10A11C11050	Y301AZ 110/50VAC	136,25	0	136,25
EL10A11C22050	Y301AZ 220/50VAC	136,25	0	136,25
EL10A11C12VDC	Y301DZ 12VDC	126,45	0	126,45
EL10A11C24VDC	Y301DZ 24VDC	126,45	0	126,45
EL10B11C02450	B301AZ 24/50VAC	136,30	0	136,30
EL10B11C11050	B301AZ 110/50VAC	136,25	0	136,25
EL10B11C22050	B301AZ 220/50VAC	136,25	0	136,25
EL10B11C12VDC	B301DZ 12VDC	127,45	0	127,45
EL10B11C24VDC	B301DZ 24VDC	127,45	0	127,45
EL10C11A02450	C301AZ 24/50VAC	136,25	0	136,25
EL10C11A11050	C301AZ 110/50VAC	136,25	0	136,25
EL10C11A22050	C301AZ 220/50VAC	136,25	0	136,25
EL10C11A12VDC	C301DZ 12VDC	127,45	0	127,45
EL10C11A24VDC	C301DZ 24VDC	126,45	0	126,45



LC2

ELETTROVALVOLA A COMANDO
DIRETTO CETOP 5

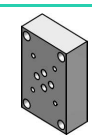
CODICE	TIPO	Listino	Sc	Netto
EL20A02002450	A201AZ 24/50VAC	333,65	0	333,65
EL20A02011050	A201AZ 110/50VAC	333,65	0	333,65
EL20A02022050	A201AZ 220/50VAC	333,65	0	333,65
EL20A02012VDC	A201DZ 12VDC	331,05	0	331,05
EL20A02024VDC	A201DZ 24VDC	331,05	0	331,05
EL20B02002450	B201AZ 24/50VAC	309,05	0	309,05
EL20B02011050	B201AZ 110/50VAC	309,05	0	309,05
EL20B02022050	B201AZ 220/50VAC	311,45	0	311,45
EL20B02012VDC	B201DZ 12VDC	311,45	0	311,45
EL20B02024VDC	B201DZ 24VDC	311,45	0	311,45
EL20C02002450	C201AZ 24/50VAC	311,45	0	311,45
EL20C02011050	C201AZ 110/50VAC	311,45	0	311,45
EL20C02022050	C201AZ 220/50VAC	311,45	0	311,45
EL20C02012VDC	C201DZ 12VDC	311,45	0	311,45
EL20C02024VDC	C201DZ 24VDC	311,45	0	311,45
EL20E02002450	E201AZ 24/50VAC	311,45	0	311,45
EL20E02011050	E201AZ 110/50VAC	311,45	0	311,45
EL20E02022050	E201AZ 220/50VAC	311,45	0	311,45
EL20E02012VDC	E201DZ 12VDC	311,45	0	311,45
EL20E02024VDC	E201DZ 24VDC	311,45	0	311,45
EL20A11S02450	A301AZ 24/50VAC	257,70	0	257,70
EL20A11S11050	A301AZ 110/50VAC	257,70	0	257,70
EL20A11S22050	A301AZ 220/50VAC	257,70	0	257,70
EL20A11S12VDC	A301DZ 12VDC	257,70	0	257,70
EL20A11S24VDC	A301DZ 24VDC	257,70	0	257,70
EL20A11C02450	Y301AZ 24/50VAC	235,45	0	235,45
EL20A11C11050	Y301AZ 110/50VAC	235,45	0	235,45
EL20A11C22050	Y301AZ 220/50VAC	235,40	0	235,40
EL20A11C12VDC	Y301DZ 12VDC	235,45	0	235,45
EL20A11C24VDC	Y301DZ 24VDC	233,60	0	233,60
EL20B11C02450	B301AZ 24/50VAC	235,45	0	235,45
EL20B11C11050	B301AZ 110/50VAC	235,45	0	235,45
EL20B11C22050	B301AZ 220/50VAC	235,45	0	235,45
EL20B11C12VDC	B301DZ 12VDC	235,45	0	235,45
EL20B11C24VDC	B301DZ 24VDC	235,45	0	235,45
EL20C11A02450	C301AZ 24/50VAC	235,45	0	235,45
EL20C11A11050	C301AZ 110/50VAC	235,45	0	235,45
EL20C11A22050	C301AZ 220/50VAC	235,45	0	235,45
EL20C11A12VDC	C301DZ 12VDC	235,45	0	235,45
EL20C11A24VDC	C301DZ 24VDC	235,45	0	235,45



ES-D-PL

PIASTRA DI MONTAGGIO PER
ELETTROVALVOLE SENZA VMP
CETOP 3

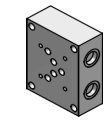
CODICE	TIPO	Listino	Sc	Netto
EV95050005	ES3-D-38-PL	56,25	0	56,25



ES3-A-P

PIASTRA DI MONTAGGIO PER
ELETTROVALVOLE SENZA VMP
CETOP 3

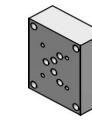
CODICE	TIPO	Listino	Sc	Netto
EV95050003	ES3-A-38-P	46,55	0	46,55



ES5-A-PL

PIASTRA DI MONTAGGIO PER
ELETTROVALVOLE SENZA VMP
CETOP 5

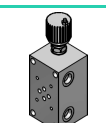
CODICE	TIPO	Listino	Sc	Netto
EV95070005	ES5-A-12-PL	82,40	0	82,40



ES5-A-P

PIASTRA DI MONTAGGIO PER
ELETTROVALVOLE SENZA VMP
CETOP 5

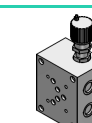
CODICE	TIPO	Listino	Sc	Netto
EV95070001	ES5-A-12-P	82,40	0	82,40



ES3-B

PIASTRA DI MONTAGGIO PER
ELETTROVALVOLE CON VMP
CETOP 3

CODICE	TIPO	Listino	Sc	Netto
EV95050024	ES3-B-38-X3 F	127,30	0	127,30
EV95050014	ES3-B-38-X3 V	129,75	0	129,75



ES5-B

PIASTRA DI MONTAGGIO PER
ELETTROVALVOLE CON VMP
CETOP 5

CODICE	TIPO	Listino	Sc	Netto
EV95070012	ES5-B-12-X3 F	187,50	0	187,50
EV95070015	ES5-B-12-X3 V	203,75	0	203,75