

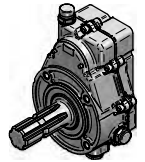
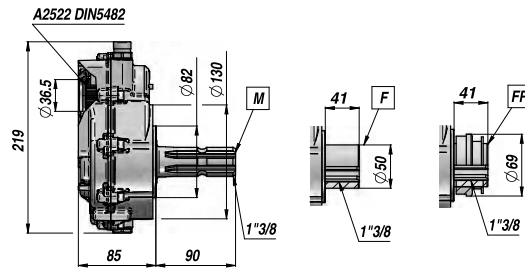
RISERVATO

SU PREZZI

DI LISTINO 12%

MOLTIPLICATORE PER POMPA GR.2
P.T.O. GEAR BOX FOR GR.2 PUMP
ÜBERSETZUNGSGETRIEBE FÜR PUMPE GR.2

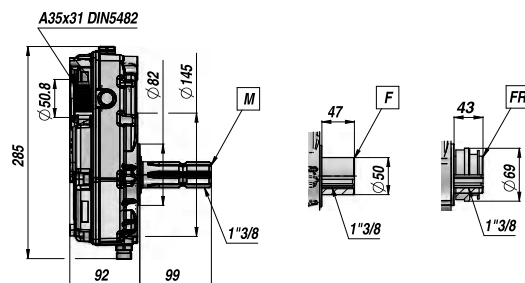
GBML32



Codice Code Bestell-Nr.	Tipo Type Typ	Albero Shaft Welle	Rapporto Ratio Verhältnis	kg
BM60001010	GBML32 - M - 1 / 1,5		1,5	5,30
BM60001020	GBML32 - M - 1 / 2,0		2,0	5,30
BM60001030	GBML32 - M - 1 / 2,5	Maschio Male	2,5	5,30
BM60001040	GBML32 - M - 1 / 3,0	Profilwelle 1"3/8 SAE J 1170	3,0	5,30
BM60001050	GBML32 - M - 1 / 3,5		3,5	5,30
BM60001060	GBML32 - M - 1 / 3,8		3,8	5,30
BM60002010	GBML32 - F - 1 / 1,5		1,5	4,50
BM60002020	GBML32 - F - 1 / 2,0		2,0	4,50
BM60002030	GBML32 - F - 1 / 2,5	Femmina Female	2,5	4,50
BM60002040	GBML32 - F - 1 / 3,0	Hohlwelle 1"3/8 SAE J 1170	3,0	4,50
BM60002050	GBML32 - F - 1 / 3,5		3,5	4,50
BM60002060	GBML32 - F - 1 / 3,8		3,8	4,50
BM60004040	GBML32 - FR - 1 / 3,0	Femmina FR Female FR	3,0	4,70
BM60004050	GBML32 - FR - 1 / 3,5	Hohlwelle FR 1"3/8 SAE J 1170	3,5	4,70
BM60004060	GBML32 - FR - 1 / 3,8		3,8	4,70

MOLTIPLICATORE PER POMPA GR.3
P.T.O. GEAR BOX FOR GR.3 PUMP
ÜBERSETZUNGSGETRIEBE FÜR PUMPE GR.3

GBML52



Codice Code Bestell-Nr.	Tipo Type Typ	Albero Shaft Welle	Rapporto Ratio Verhältnis	kg
BM70001030	GBML52 - M - 1 / 2,6		2,6	7,90
BM70001040	GBML52 - M - 1 / 3,0		3,0	7,90
BM70001050	GBML52 - M - 1 / 3,4	Maschio Male	3,4	7,90
BM70001060	GBML52 - M - 1 / 3,8	Profilwelle 1"3/8 SAE J 1170	3,8	9,20
BM70002015	GBML52 - F - 1 / 1,5		1,5	7,10
BM70002020	GBML52 - F - 1 / 2,0		2,0	7,10
BM70002030	GBML52 - F - 1 / 2,6	Femmina Female	2,6	7,10
BM70002040	GBML52 - F - 1 / 3,0	Hohlwelle 1"3/8 SAE J 1170	3,0	7,10
BM70002050	GBML52 - F - 1 / 3,4		3,4	7,10
BM70002060	GBML52 - F - 1 / 3,8		3,8	8,40
BM70004040	GBML52 - FR - 1 / 3,0	Femmina FR Female FR	3,0	7,30
BM70004060	GBML52 - FR - 1 / 3,8	Hohlwelle FR 1"3/8 SAE J 1170	3,8	8,60

COMPONENTI E ORGANI DI TRASMISSIONE



GBML32

MOLTIPLICATORE PER POMPA GR.2

CODICE	TIPO	Listino	Sc.	Netto
BM60001010	GBML32-M-1/1,5	184,25	0	184,25
BM60001020	GBML32-M-1/2,0	184,30	0	184,30
BM60001030	GBML32-M-1/2,5	162,30	0	162,30
BM60001040	GBML32-M-1/3,0	159,60	0	159,60
BM60001050	GBML32-M-1/3,5	159,60	0	159,60
BM60001060	GBML32-M-1/3,8	159,60	0	159,60
BM60002010	GBML32-F-1/1,5	184,30	0	184,30
BM60002020	GBML32-F-1/2,0	184,30	0	184,30
BM60002030	GBML32-F-1/2,5	162,30	0	162,30
BM60002040	GBML32-F-1/3,0	159,60	0	159,60
BM60002050	GBML32-F-1/3,5	159,60	0	159,60
BM60002060	GBML32-F-1/3,8	159,60	0	159,60
BM60004040	GBML32-FR-1/3,0	193,80	0	193,80
BM60004050	GBML32-FR-1/3,5	193,80	0	193,80
BM60004060	GBML32-FR-1/3,8	193,80	0	193,80



GBML52

MOLTIPLICATORE PER POMPA GR.3

CODICE	TIPO	Listino	Sc.	Netto
BM70001030	GBML52-M-1/2,6	228,55	0	228,55
BM70001040	GBML52-M-1/3,0	231,00	0	231,00
BM70001050	GBML52-M-1/3,4	231,00	0	231,00
BM70001060	GBML52-M-1/3,8	231,00	0	231,00
BM70002015	GBML52-F-1/1,5	278,25	0	278,25
BM70002020	GBML52-F-1/2,0	294,00	0	294,00
BM70002030	GBML52-F-1/2,6	228,55	0	228,55
BM70002040	GBML52-F-1/3,0	231,00	0	231,00
BM70002050	GBML52-F-1/3,4	231,00	0	231,00
BM70002060	GBML52-F-1/3,8	231,00	0	231,00
BM70004040	GBML52-FR-1/3,0	275,70	0	275,70
BM70004050	GBML52-FR-1/3,4	271,10	0	271,10
BM70004060	GBML52-FR-1/3,8	284,05	0	284,05



GBR2

RIDUTTORE GR.2
FLANGIA SAE A

CODICE	TIPO	Listino	Sc.	Netto
BR95001010	GBML52-M-1/2,6	238,70	0	238,70
BR95001020	GBML52-M-1/3,0	238,70	0	238,70
BR95001030	GBML52-M-1/3,4	207,35	0	207,35
BR95001040	GBML52-M-1/3,8	206,85	0	206,85
BR95001050	GBML52-F-1/1,5	206,90	0	206,90
BR95001060	GBML52-F-1/2,0	207,35	0	207,35
BR95002010	GBML52-F-1/2,6	238,70	0	238,70
BR95002020	GBML52-F-1/3,0	238,70	0	238,70
BR95002030	GBML52-F-1/3,4	207,35	0	207,35
BR95002040	GBML52-F-1/3,8	207,35	0	207,35
BR95002050	GBML52-FR-1/3,0	207,35	0	207,35
BR95002060	GBML52-FR-1/3,4	207,35	0	207,35

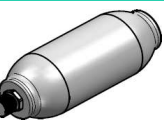


GBR3

RIDUTTORE GR.3
FLANGIA SAE A

CODICE	TIPO	Listino	Sc.	Netto
BR96001010	GBML52-M-1/2,6	369,55	0	369,55
BR96001020	GBML52-M-1/3,0	369,55	0	369,55
BR96001030	GBML52-M-1/3,4	344,40	0	344,40
BR96001040	GBML52-M-1/3,8	344,40	0	344,40
BR96001050	GBML52-F-1/1,5	344,40	0	344,40
BR96001060	GBML52-F-1/2,0	344,40	0	344,40

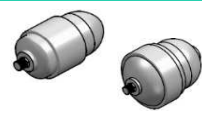
ACCUMULATORI E STRUMENTI DI MISURAZIONE



H

ACCUMULATORE IDROPNEUMATICO
A MEMBRANA

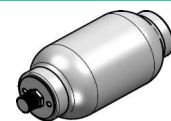
CODICE	TIPO	Listino	Sc.	Netto
ACH0000100	H 100 R	77,90	0	77,90
ACH0000350	H 350 R	79,80	0	79,80
ACH0000500	H 500 R	82,85	0	82,85
ACH0000700	H 700 R	91,80	0	91,80
ACH0000990	H 990 R	107,75	0	107,75
ACH0001000	H 1000 R	111,70	0	111,70
ACH0001400	H 1400 R	145,50	0	145,50
ACH0002000	H 2000 R	223,80	0	223,80
ACH0003000	H 3000 R	323,25	0	323,25
ACH0004000	H 4000 R	374,20	0	374,20



HST

ACCUMULATORE IDROPNEUMATICO
A MEMBRANA

CODICE	TIPO	Listino	Sc.	Netto
ACHST00040	HST 0,05	69,90	0	69,90
ACHST00100	HST 0,1	83,50	0	83,50
ACHST00350	HST 0,35	99,05	0	99,05
ACHST00500	HST 0,5	135,90	0	135,90
ACHST00700	HST 0,7	124,25	0	124,25
ACHST00800	HST 0,8	149,50	0	149,50
ACHST01300	HST 1,3	207,75	0	207,75
ACHST01500	HST 1,5	228,10	0	228,10
ACHST02300	HST 2,3	320,35	0	320,35



HTR

ACCUMULATORE IDROPNEUMATICO
A SACCA

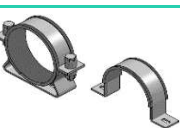
CODICE	TIPO	Listino	Sc.	Netto
ACHTR00350	HTR 0,35	95,25	0	95,25
ACHTR00700	HTR 0,7	106,45	0	106,45
ACHTR01500	HTR 1,5	164,45	0	164,45
ACHTR02500	HTR 2,5	381,20	0	381,20
ACHTR04501	HTR 4,5	519,65	0	519,65
ACHTR06500	HTR 6,5	646,55	0	646,55
ACHTR10000	HTR 10	784,80	0	784,80
ACHTR20000	HTR 20	1196,80	0	1196,80
ACHTR35000	HTR 35	1671,45	0	1671,45
ACHTR50000	HTR 50	2009,80	0	2009,80



HB

ACCUMULATORE IDROPNEUMATICO
A SACCA

CODICE	TIPO	Listino	Sc.	Netto
ACHB025330	HB 2.5	725,65	0	725,65
ACHB045330	HB 4.5	782,75	0	782,75
ACHB060330	HB 6	962,10	0	962,10
ACHB100330	HB 10	1072,20	0	1072,20
ACHB102330	HB 10/2	1333,10	0	1333,10
ACHB200330	HB 20	1422,95	0	1422,95
ACHB250330	HB 25	1638,85	0	1638,85
ACHB350330	HB 35	1916,05	0	1916,05
ACHB500330	HB 50	2442,15	0	2442,15



ACR-ACRE

COLLARI PER FISSAGGIO
ACCUMULATORI

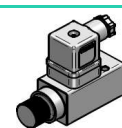
CODICE	TIPO	Listino	Sc.	Netto
ACR1140000	CR 114	68,60	0	68,60
ACR1680000	CR 168	76,90	0	76,90
ACR2230000	CR 223	85,65	0	85,65
ACRE070000	CRE 70	17,25	0	17,25
ACRE092000	CRE 92	19,35	0	19,35
ACRE115000	CRE 115	21,45	0	21,45
ACRE125000	CRE 125	**	0	#####
ACRE138000	CRE 138	21,45	0	21,45



ACAR

VALIGETTA CON APPARECCHIATURA
PER RICARICA ACCUMULATORI

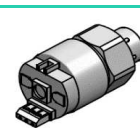
CODICE	TIPO	Listino	Sc.	Netto
ACAR100000	AR1- 40	444,55	0	444,55
ACAR200000	AR2- 60	444,55	0	444,55
ACAR300000	AR3-100	444,55	0	444,55
ACAR400000	AR4-160	444,55	0	444,55
ACAR500000	AR5-250	444,55	0	444,55
ACAR600000	AR6-400	444,55	0	444,55



F5

PRESSOSTATO REGOLABILE

CODICE	TIPO	Listino	Sc.	Netto
APIF530000	F53	91,10	0	91,10
APIF550000	F55	91,10	0	91,10
APIF570000	F57	91,10	0	91,10



F4

PRESSOSTATO REGOLABILE CON
CAPPUCCIO

CODICE	TIPO	Listino	Sc.	Netto
APIF4R10P2	F4R-1-P3+P1	20,60	0	20,60
APIF4S10P2	F4S-1-P3+P1	21,80	0	21,80
APIF4T10P2	F4T-1-P3+P1	24,90	0	24,90
APIF4V10P2	F4V-1-P3+P1	24,90	0	24,90
APIF4Z10P2	F4Z-1-P3+P1	24,90	0	24,90
APIF4Y10P2	F4Y-1-P3+P1	32,75	0	32,75