

**RISERVATO**

**SU PREZZI**

**DI LISTINO 12%**

MOTORE "M+S HYDRAULIC"  
"M+S HYDRAULIC" MOTOR  
MOTOR "M+S HYDRAULIC"

ALBERO CILINDRICO Ø16  
PARALLEL SHAFT Ø16  
ZYLINDRISCHE WELLE Ø16

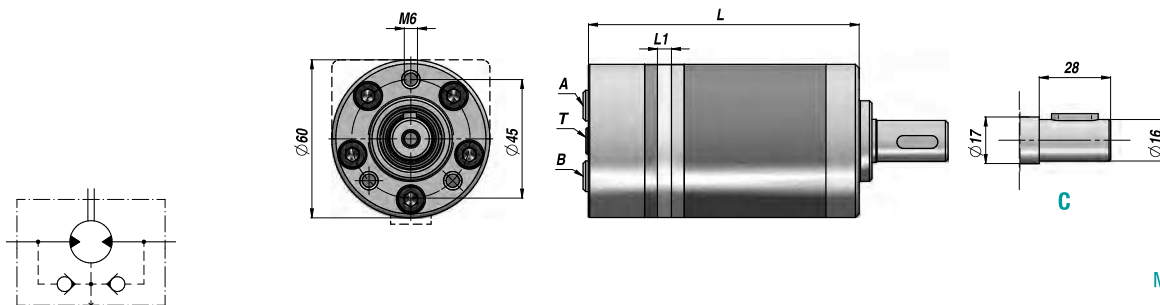
SENZA FLANGIA  
WITHOUT FLANGE  
OHNE FLANSCH



**MPM (MM)**

Standard: CONNESSIONI POSTERIORI - REAR PORTS - ANSCHLÜSSE HINTEN

VALVOLE UNIDIREZIONALI INCORPORATE  
BUILT-IN CHECK VALVES  
EINGEBAUTE RÜCKSCHLAGVENTILE



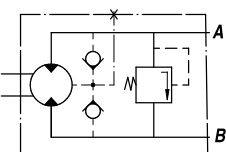
PREDISPOSTO PER IL DRENAGGIO  
MACHINED FOR DRAIN CONNECTION  
FÜR DRÄNLEITUNG GEEIGNET

Codice Code Bestell-Nr.	Tipo Type Typ	cm <sup>3</sup> /giro cm <sup>3</sup> /rev cm <sup>3</sup> /U	n. Max giri/min rpm - U/Min.	M Max daNm	Q MAX l/min	P MAX bar			A - B	T	L	L1	kg
						Caduta Drop Gefälle Δp	Ingresso Inlet Eingang	Ritorno Return Rücklauf					
<b>LAVORO CONTINUO - CONTINUOUS WORK - DAUERARBEIT</b>													
MPM008NC16	MPM 8 C	8,2	1950	1,1	16	105	140	140 *	3/8"	1/8"	104	3,5	1,90
MPM012NC16	MPM 12 C	12,9	1550	1,6	20	105	140	140 *			106	5,5	2,00
MPM020NC16	MPM 20 C	20,0	1000	2,5	20	105	140	140 *			109	8,5	2,10
MPM032NC16	MPM 32 C	31,8	630	4,0	20	105	140	140 *			114	13,5	2,20
MPM040NC16	MPM 40 C	40,0	500	4,1	20	82,5	140	140 *			117,5	17,0	2,30
MPM050NC16	MPM 50 C	50,0	400	4,5	20	70	140	140 *			121,5	21,0	2,50

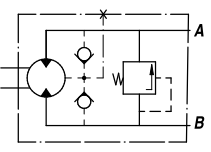
\* = CON DRENAGGIO - WITH DRAIN - MIT DRÄNLEITUNG

**OPTION**

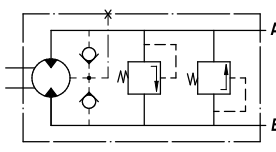
P.../R  
VMP SULLA LINEA "A"  
RELIEF VALVE ON LINE "A"  
DBV AUF LEITUNG "A"



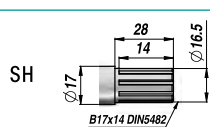
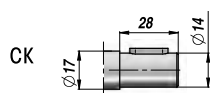
P.../L  
VMP SULLA LINEA "B"  
RELIEF VALVE ON LINE "B"  
DBV AUF LEITUNG "B"



.../D  
VMP SULLE LINEE "A/B"  
RELIEF VALVE ON LINES "A/B"  
DBV AUF LEITUNGEN "A/B"

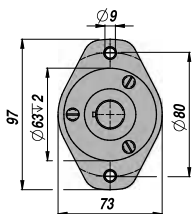


**OPTION**



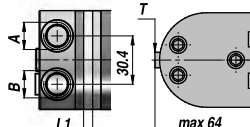
**OPTION**

F: (Oval Mount)

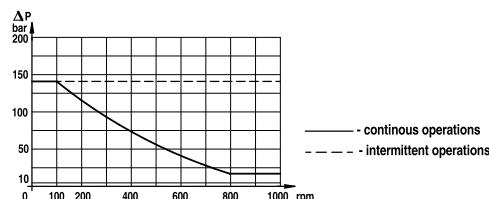


**OPTION**

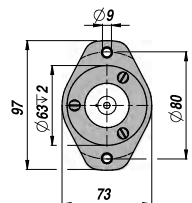
S: CONNESSIONI LATERALI  
SIDE PORTS  
ANSCHLÜSSE SEITLICH



**PRESSIONE MAX. AL RITORNO SENZA DRENAGGIO  
MAX. RETURN PRESSURE WITHOUT DRAIN  
MAX GEGENDRUCK OHNE DRÄNLEITUNG**



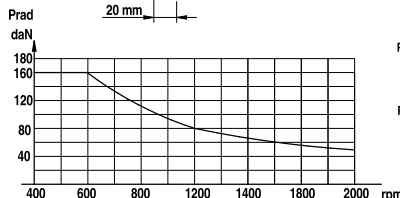
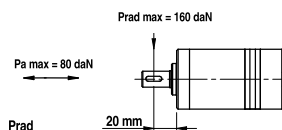
FLANGE KIT  
Code: MF48443014



CON N.3 VITI M6x14"  
WITH No.3 SCREWS M6x14  
MIT Nr.3 SCHRAUBEN M6x14

**CARICHI AMMESSI SULL'ALBERO  
PERMISSIBLE SHAFT LOADS  
ZULÄSSIGE WELLENBELASTUNGEN**

Albero-Shaft-Welle: "C-CK-SH"



Prad = Carico radiale  
Radial load  
Radiale Belastung  
Pa = Carico assiale  
Axial load  
Axiale Belastung

## MOTORI ORBITALI

## MCM

MOTORE "Z-J HYDRAULIC" ALBERO  
CILINDRICO Ø16 CONNESSIONI  
POSTERIORI

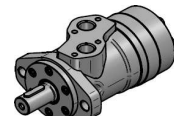
CODICE	TIPO	Listino	Sc	Netto
MCM00008C0	MC-M 08 C	164,20	0	164,20
MCM00012C0	MC-M 12 C	164,25	0	164,25
MCM00020C0	MC-M 20 C	167,85	0	167,85
MCM00032C0	MC-M 32 C	171,55	0	171,55
MCM00040C0	MC-M 40 C	175,25	0	175,25
MCM00050C0	MC-M 50 C	182,60	0	182,60



## MCMS

MOTORE "Z-J HYDRAULIC" ALBERO  
CILINDRICO Ø16 CONNESSIONI  
LATERALI

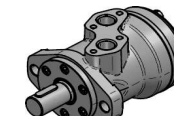
CODICE	TIPO	Listino	Sc	Netto
MCM00S08C0	MC-MS 08 C	164,20	0	164,20
MCM00S12C0	MC-MS 12 C	164,25	0	164,25
MCM00S20C0	MC-MS 20 C	167,85	0	167,85
MCM00S32C0	MC-MS 32 C	171,55	0	171,55
MCM00S40C0	MC-MS 40 C	175,25	0	175,25
MCM00S50C0	MC-MS 50 C	182,60	0	182,60



## MCPN

MOTORE "Z-J HYDRAULIC" ALBERO  
CILINDRICO Ø25  
FLANGIA "SAE A" - 2 FORI

CODICE	TIPO	Listino	Sc	Netto
MCPN036C00	MC-PN 36 CD	179,20	0	179,20
MCPN050C00	MC-PN 50 CD	179,20	0	179,20
MCPN080C00	MC-PN 80 CD	182,90	0	182,90
MCPN100C00	MC-PN 100 CD	186,65	0	186,65
MCPN125C00	MC-PN 125 CD	190,30	0	190,30
MCPN160C00	MC-PN 160 CD	194,05	0	194,05
MCPN200C00	MC-PN 200 CD	199,65	0	199,65
MCPN250C00	MC-PN 250 CD	203,35	0	203,35
MCPN315C00	MC-PN 315 CD	212,60	0	212,60
MCPN400C00	MC-PN 400 CD	216,55	0	216,55
MCPN500C00	MC-PN 500 CD	236,15	0	236,15



## MCRN

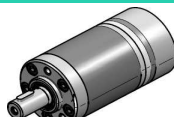
MOTORE "Z-J HYDRAULIC" ALBERO  
CILINDRICO Ø25  
FLANGIA "SAE A" - 2 FORI

CODICE	TIPO	Listino	Sc	Netto
MCRN036C00	MC-RN 36 CD	215,05	0	215,05
MCRN050C00	MC-RN 50 CD	215,05	0	215,05
MCRN080C00	MC-RN 80 CD	218,95	0	218,95
MCRN100C00	MC-RN 100 CD	222,60	0	222,60
MCRN125C00	MC-RN 125 CD	226,55	0	226,55
MCRN160C00	MC-RN 160 CD	232,40	0	232,40
MCRN200C00	MC-RN 200 CD	240,10	0	240,10
MCRN250C00	MC-RN 250 CD	242,25	0	242,25
MCRN315C00	MC-RN 350 CD	246,30	0	246,30
MCRN400C00	MC-RN 400 CD	255,00	0	255,00

## MCSY

MOTORE "Z-J HYDRAULIC" ALBERO  
CILINDRICO Ø32  
FLANGIA "SAE A" - 4 FORI

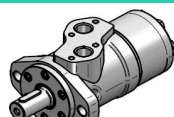
CODICE	TIPO	Listino	Sc	Netto
MCSY080C00	MC-SY 80 C	363,50	0	363,50
MCSY100C00	MC-SY 100 C	375,05	0	375,05
MCSY125C00	MC-SY 125 C	379,00	0	379,00
MCSY160C00	MC-SY 160 C	386,90	0	386,90
MCSY200C00	MC-SY 200 C	394,70	0	394,70
MCSY250C00	MC-SY 250 C	398,85	0	398,85
MCSY315C00	MC-SY 315 C	425,90	0	425,90
MCSY400C00	MC-SY 400 C	441,30	0	441,30
MCSY475C00	MC-SY 475 C	465,20	0	465,20



## MPM (MM)

MOTORE "M+S HYDRAULIC" ALBERO  
CILINDRICO Ø16 SENZA FLANGIA

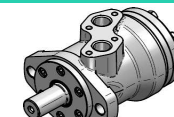
CODICE	TIPO	Listino	Sc	Netto
MPM008NC16	MPM 8 C	198,95	0	198,95
MPM012NC16	MPM 12 C	202,25	0	202,25
MPM020NC16	MPM 20 C	205,60	0	205,60
MPM032NC16	MPM 32 C	208,95	0	208,95
MPM040NC16	MPM 40 C	223,35	0	223,35
MPM050NC16	MPM 50 C	249,80	0	249,80



## MPP (MP)

MOTORE "M+S HYDRAULIC" ALBERO  
CILINDRICO Ø25  
FLANGIA "SAE A" - 2 FORI

CODICE	TIPO	Listino	Sc	Netto
MSP025NC25	MPP 25 CD	242,20	0	242,20
MSP032NC25	MPP 32 CD	244,45	0	244,45
MSP040NC25	MPP 40 CD	245,95	0	245,95
MSP050NC25	MPP 50 C	228,70	0	228,70
MSP080NC25	MPP 80 C	235,40	0	235,40
MSP100NC25	MPP 100 C	239,80	0	239,80
MSP125NC25	MPP 125 C	246,50	0	246,50
MSP160NC25	MPP 160 C	253,20	0	253,20
MSP200NC25	MPP 200 C	262,05	0	262,05
MSP250NC25	MPP 250 C	268,70	0	268,70
MSP315NC25	MPP 315 C	275,35	0	275,35
MSP400NC25	MPP 400 C	286,50	0	286,50
MSP500NC25	MPP 500 C	353,65	0	353,65
MSP630NC25	MPP 630 C	414,90	0	414,90



## MPR (MR)

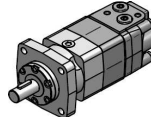
MOTORE "M+S HYDRAULIC" ALBERO  
CILINDRICO Ø25  
FLANGIA "SAE A" - 2 FORI

CODICE	TIPO	Listino	Sc	Netto
MSR050NC25	MPR 50 C	294,50	0	294,50
MSR080NC25	MPR 80 C	303,10	0	303,10
MSR100NC25	MPR 100 C	308,75	0	308,75
MSR125NC25	MPR 125 C	317,45	0	317,45
MSR160NC25	MPR 160 C	326,00	0	326,00
MSR200NC25	MPR 200 C	337,40	0	337,40
MSR250NC25	MPR 250 C	346,00	0	346,00
MSR315NC25	MPR 315 C	354,60	0	354,60
MSR400NC25	MPR 400 C	368,90	0	368,90

## MPS (MS)

MOTORE "M+S HYDRAULIC" ALBERO  
CILINDRICO Ø32  
FLANGIA "SAE A" - 4 FORI

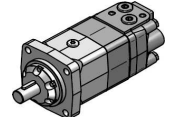
CODICE	TIPO	Listino	Sc	Netto
MPS080NC32	MPS 80 C	500,55	0	500,55
MPS100NC32	MPS 100 C	506,50	0	506,50
MPS125NC32	MPS 125 C	515,25	0	515,25
MPS160NC32	MPS 160 C	527,05	0	527,05
MPS200NC32	MPS 200 C	535,85	0	535,85
MPS250NC32	MPS 250 C	544,70	0	544,70
MPS315NC32	MPS 315 C	577,05	0	577,05
MPS400NC32	MPS 400 C	606,50	0	606,50
MPS475NC32	MPS 475 C	796,35	0	796,35
MPS525NC32	MPS 525 C	811,05	0	811,05
MPS565NC32	MPS 565 C	825,75	0	825,75



## MPT (MT)

MOTORE "M+S HYDRAULIC" ALBERO  
CILINDRICO Ø40  
FLANGIA QUADRA - 4 FORI

CODICE	TIPO	Listino	Sc	Netto
MPT160NC40	MPT 160 C	886,20	0	886,20
MPT200NC40	MPT 200 C	905,15	0	905,15
MPT250NC40	MPT 250 C	933,95	0	933,95
MPT315NC40	MPT 315 C	958,00	0	958,00
MPT400NC40	MPT 400 C	996,25	0	996,25
MPT500NC40	MPT 500 C	1063,30	0	1063,30
MPT630NC40	MPT 630 C	1248,60	0	1248,60
MPT725NC40	MPT 725 C	1316,50	0	1316,50



## MPV (MV)

MOTORE "M+S HYDRAULIC" ALBERO  
CILINDRICO Ø50  
FLANGIA QUADRA - 4 FORI

CODICE	TIPO	Listino	Sc	Netto
MPV315C000	MPV 315 C	1275,95	0	1275,95
MPV400C000	MPV 400 C	1326,90	0	1326,90
MPV500C000	MPV 500 C	1416,10	0	1416,10
MPV630C000	MPV 630 C	1658,20	0	1658,20
MPV800C000	MPV 800 C	1747,45	0	1747,45